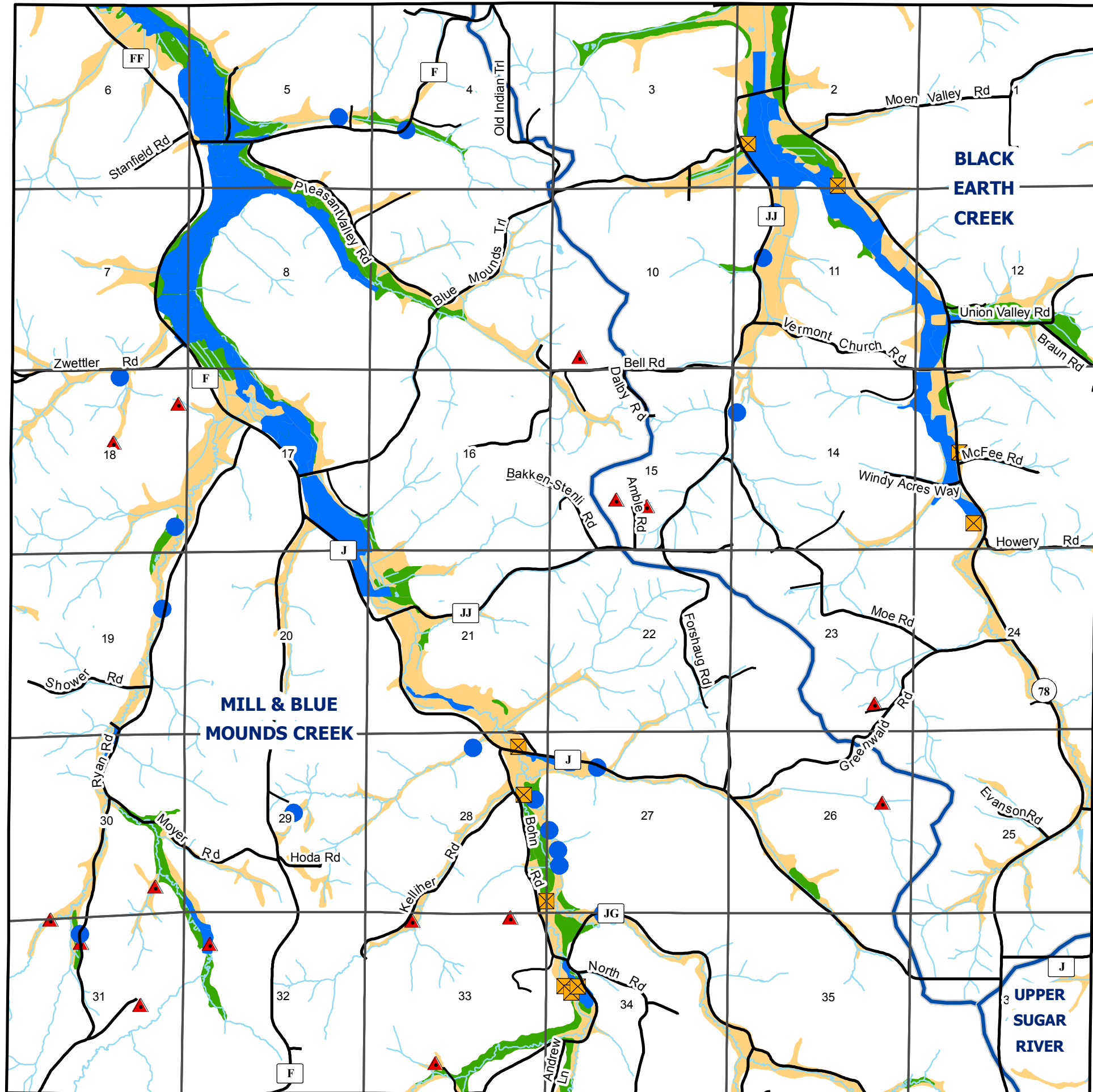
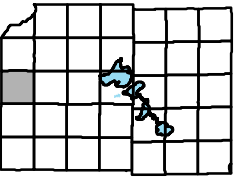









Town of Vermont

Hydric Soils & Wetlands



-  Watershed Boundary
-  Wetlands < 2 acres
-  Dammed Pond
-  Excavated Pond
-  Wetlands > 2 acres
-  Hydric Inclusions
-  All Hydric

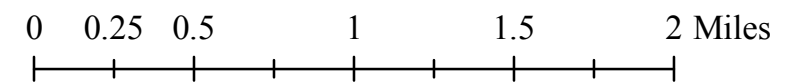
Hydric soils are those soils that are sufficiently wet in the upper part to develop anaerobic conditions during the growing season

The 100 year floodplain is based on a digitization of the National Flood Insurance Program maps. These maps are maintained and updated by The Federal Insurance and Mitigation Administration's Hazard Mapping Division.

Floodplains do not represent only those areas that will flood, rather they are meant to locate potential areas that are susceptible to flooding. For a detailed analysis of floodplains contact the FEMA Hazard Mapping Division at 1-877-FEMA-MAP

For interpretation or regulation of floodplains contact the Dane County Zoning Administrators office at 266-9083

Oct., 2008



Source Info:
 Floodplain: 2003, (FEMA)
 Hydric Soils: Digital Soils (NRCS, LCD, LICGF)
 Hydrography: 2005, (WIDNR)
 Watershed Boundaries: 2005, (DCLIO)
 Wetlands: 2000, (WIDNR)

This map was prepared through the Dane County Department of Planning and Development in conjunction with the Dane County Land & Water Resources Department, Dane County Land Information Office and the Dane County Community Analysis & Planning Division.